



WIM Pro 3.0

WEIGH IN MOTION
SYSTEM

safety and flow



WIM Pro 3.0

WEIGHING IN MOTION

The WIM Pro 3.0 system is a state-of-the-art solution for weighing vehicles in motion at high speeds. The basic configuration provides statistical traffic data. Enhanced with ANPR cameras, it allows the pre-selection of vehicles that exceed acceptable standards, in particular vehicle weight and axle load. In combination with VMS, it creates a system that directs vehicles exceeding the limit to a parking area. The WIM Pro 3.0 system, operating in automatic or semi-automatic mode allows to carry out selective checks on vehicles of a specific type. The most advanced solution enables the detection of double tyres and a driving track, and in combination with the CEPIK database it enables automatic fining.

WIM Pro 3.0 was developed with a focus on the highest possible reliability and measurement accuracy, even for a large number of lanes, and can be integrated with other ITS systems. WIM Pro 3.0 functions as:

STATISTICAL SYSTEM

The system provides detailed statistical data necessary for effective management of road infrastructure repairs. It is also an excellent source of data for planners.

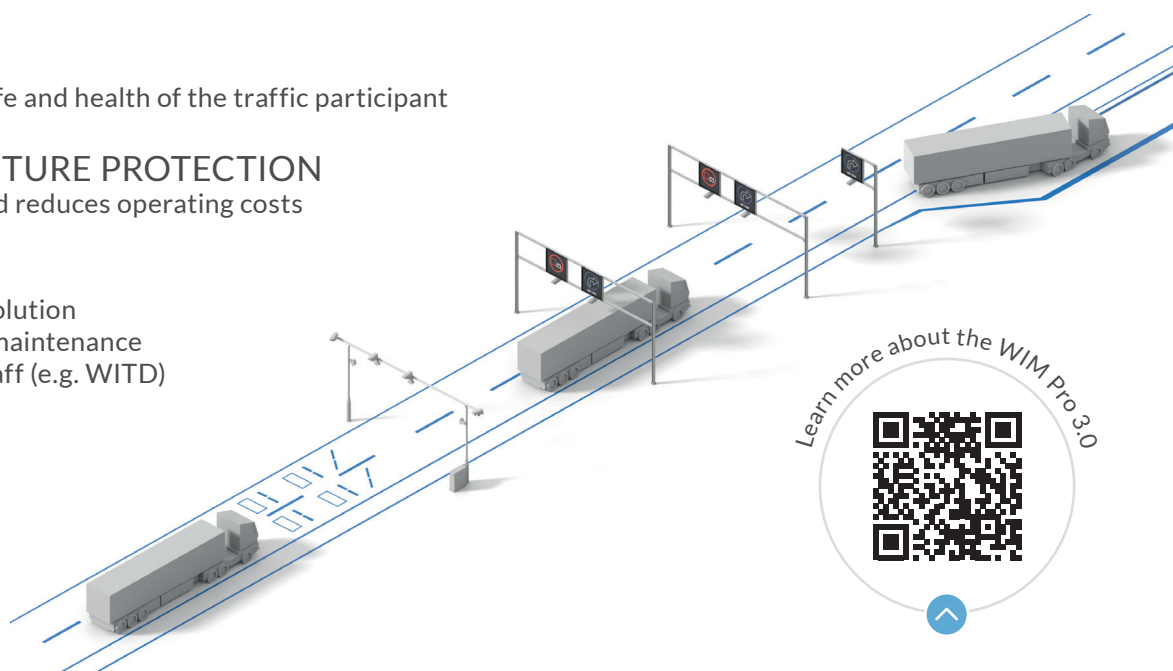
OVERLOAD VEHICLE PRESELECTION SYSTEM

The system enables vehicles to be preselected so that only those previously identified as overloaded are weighed on certified scales. Thus, WIM Pro improves the work of traffic enforcement services.

DIRECT TICKETING SYSTEM

WIM Pro is the most advanced and effective tool for road infrastructure protection. It runs continuously and does not require the involvement of enforcement services. The solution works automatically, without any impact on traffic flow.

- **SAFETY**
helps to protect life and health of the traffic participant
- **INFRASTRUCTURE PROTECTION**
extends its life and reduces operating costs
- **AUTONOMY**
fully automated solution
does not require maintenance
by supervisory staff (e.g. WITD)

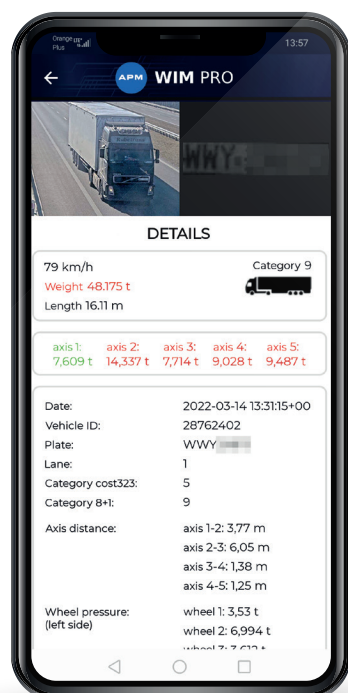




safety and flow



SOFTWARE



READINGS – this is the main part of the WIM Pro 3.0 system software, where vehicle data is presented in real time. Data from several stations with different technologies can be presented in one module. A set of filters selected individually by each operator allows viewing vehicles that meet the selected criteria. The standard configuration of the system allows selection according to many parameters such as permitted weight, category, and speed of vehicles. An automatic change of language settings based on browser configuration is possible.

STATISTICS – the module enables generation of statistics on traffic structure, weight and speed of vehicles divided into categories, as well as any other statistics according to individual user needs.

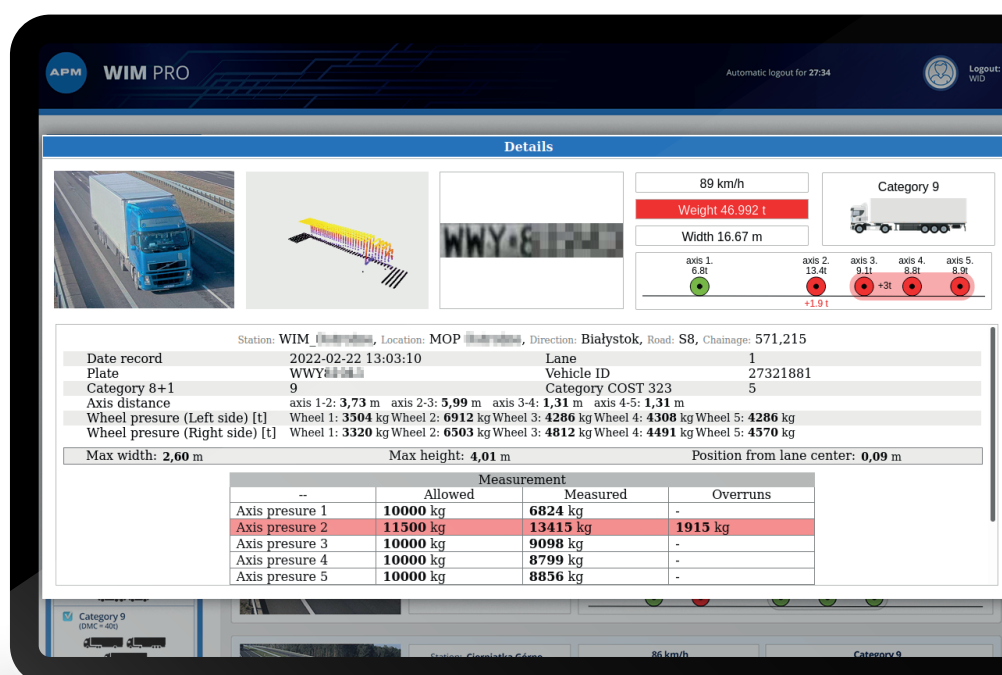
DATA EXPORT – WIM PRO allows you to save data from the system to *.csv or *.xls files.

ADMINISTRATION PANEL – contains the tools to manage users and their privileges.

SERVICE NOTIFICATIONS – the fault reporting module integrated into the service software allows for direct reporting to the manufacturer's service department of any irregularities or faults in functioning of the weighing station.

TECHNICAL SPECIFICATION

- Detection of abnormal vehicles
- Interface for mobile devices
- Measurement of vehicle parameters including vehicle weight, axle load, group axle detection, speed
- Detection of the incorrect passage
- Measurement of vehicle dimensions
- Weighing accuracy:
A(5), B+(7), B(10) acc. to COST323
- Vehicles classification acc. to EN 8+1 in the A1 class (other types of classification are available)
- Configurable vehicle parameter limits according to local regulations
- Possibility to integrate with other systems
- Flexibility, adapting to individual customer or end-user needs
- Linux system
- 3D image of vehicles





safety and flow



APM PRO sp. z o.o.
ul. Barska 70
43-300 Bielsko-Biala, Poland

t. +48 33 815 77 38
t. +48 33 816 82 21
f. +48 33 822 81 48

kontakt@apm.pl
apm@apm.pl
www.apm.pl